



## Mongla Port Authority

Mongla, Bagerhat- 9351

Bangladesh

Telephone : 04662-75363

Fax : 04662-75224

E-mail : dt@mpa.gov.bd

Website : [www.mpa.gov.bd](http://www.mpa.gov.bd)




Ref: 18.14.0158.180.00.320.21-

Date: -08-2021

### Circular

This is to inform all concern that Mongla Port Authority has Procured a good number of cargo and container handling equipments to enhance the capacity of the Port. Now Mongla Port Authority can handle gearless ship up to twelve rows of container. Following equipments are readily available for hire.

SL No	Name of the Equipment	Quantity	Remarks
1.	Mobile Harbour Crane (LHM 425)	04 Nos	Load chart are attached herewith.
2.	Multipurpose Mobile Crane (LHM 180)	02 Nos	

  
Md. Mostafa Kamal  
Director (Traffic)  
Mongla Port Authority

#### Distributed to:

Chairman  
Bangladesh Shipping Agents Association  
Anchary Complex (1<sup>st</sup> Floor)  
160, Sher-e-Bangla Road, Khulna.

With request to inform all of your concern members for taking necessary action please.

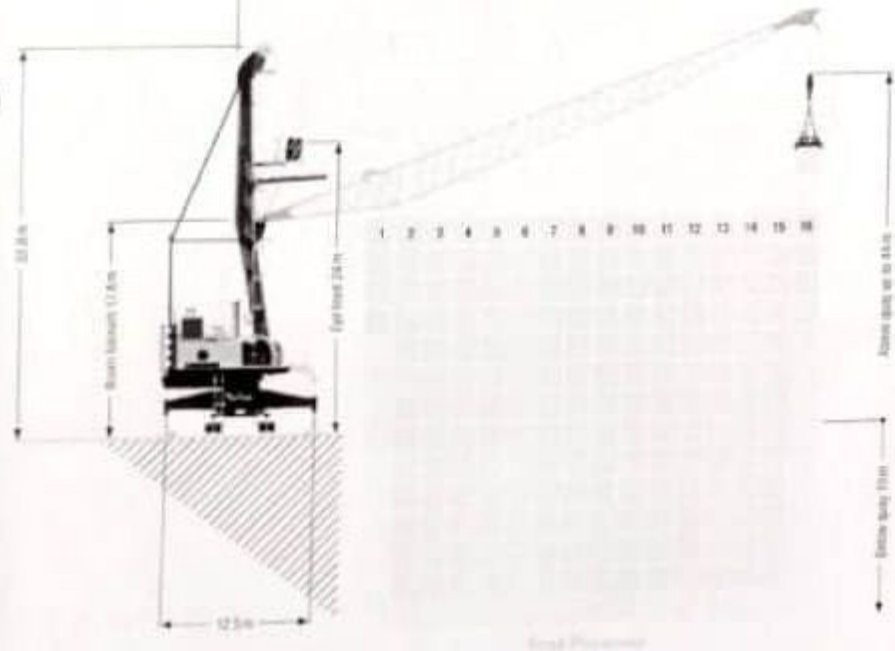
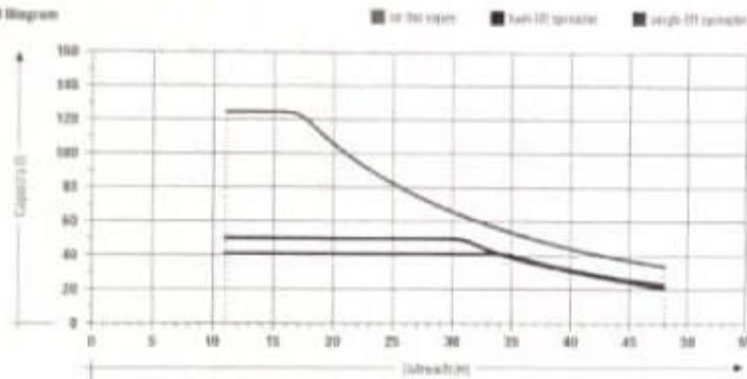
#### Copy for Information (Not according to Seniority):

1. Commissioner of Customs, Mongla Custom House, Mongla.
2. Chief Engineer (M&E), MPA, Mongla.
3. Harbour Master, MPA, Mongla.
4. Chief Finance & Accounts Officer, MPA, Mongla.
5. Chief Security Officer, MPA, Mongla.
6. PS to Chairman, MPA, Mongla.
7. P.A to Member (E&D), MPA, Mongla.
8. President, Khulna Chamber of Commerce  
Chamber Mansion, 5 KDA Commercial Area, Khulna.
9. President, Bagerhat Chamber of Commerce, Main Road, Bagerhat.
10. President/General Secretary, Mongla Port Barh & Ship Operator Association  
JI Shanta Tower (2<sup>nd</sup> Floor), 17, KDA Avenue (Moynapota), Khulna.
11. President, Mongla Custom Clearing and Forwarding Agent's Association  
C&F Tower (9<sup>th</sup> Floor), 198, M A Bari Road, Sonadanga, Khulna.

# Main Dimensions

## Container Operation

Load Diagram



# Lifting Capacities

## Container Operation

### Mobile Harbor Crane LHM 425

- >Automatic spreader for handling container
- >Grab for handling bulk cargo

Maximum crane capacity 64t

Outreach	Spreader operation meter		Hook operation on the vessel
	Single lift	Twin lift	
10	5	15	5
11	11.2	16.2	11.2
12	11.2	16.2	11.2
13	11.2	16.2	11.2
14	11.2	16.2	11.2
15	11.2	16.2	11.2
16	11.2	16.2	11.2
17	11.2	16.2	11.2
18	11.2	16.2	11.2
19	11.2	16.2	11.2
20	11.2	16.2	11.2
21	11.2	16.2	11.2
22	11.2	16.2	11.2
23	11.2	16.2	11.2
24	11.2	16.2	11.2
25	11.2	16.2	11.2
26	11.2	16.2	11.2
27	11.2	16.2	11.2
28	11.2	16.2	11.2
29	11.2	16.2	11.2
30	11.2	16.2	11.2
32	11.2	16.2	11.2
34	11.2	16.2	11.2
35	11.2	16.2	11.2
36	11.2	16.2	11.2
38	11.2	16.2	11.2
40	11.2	16.2	11.2
42	11.2	16.2	11.2
44	11.2	16.2	11.2
46	11.2	16.2	11.2
48	11.2	16.2	11.2

Weight hook 2.5t   
 Weight fully automatic telescopic spreader 3t   
 Weight twin lift spreader 10.7t

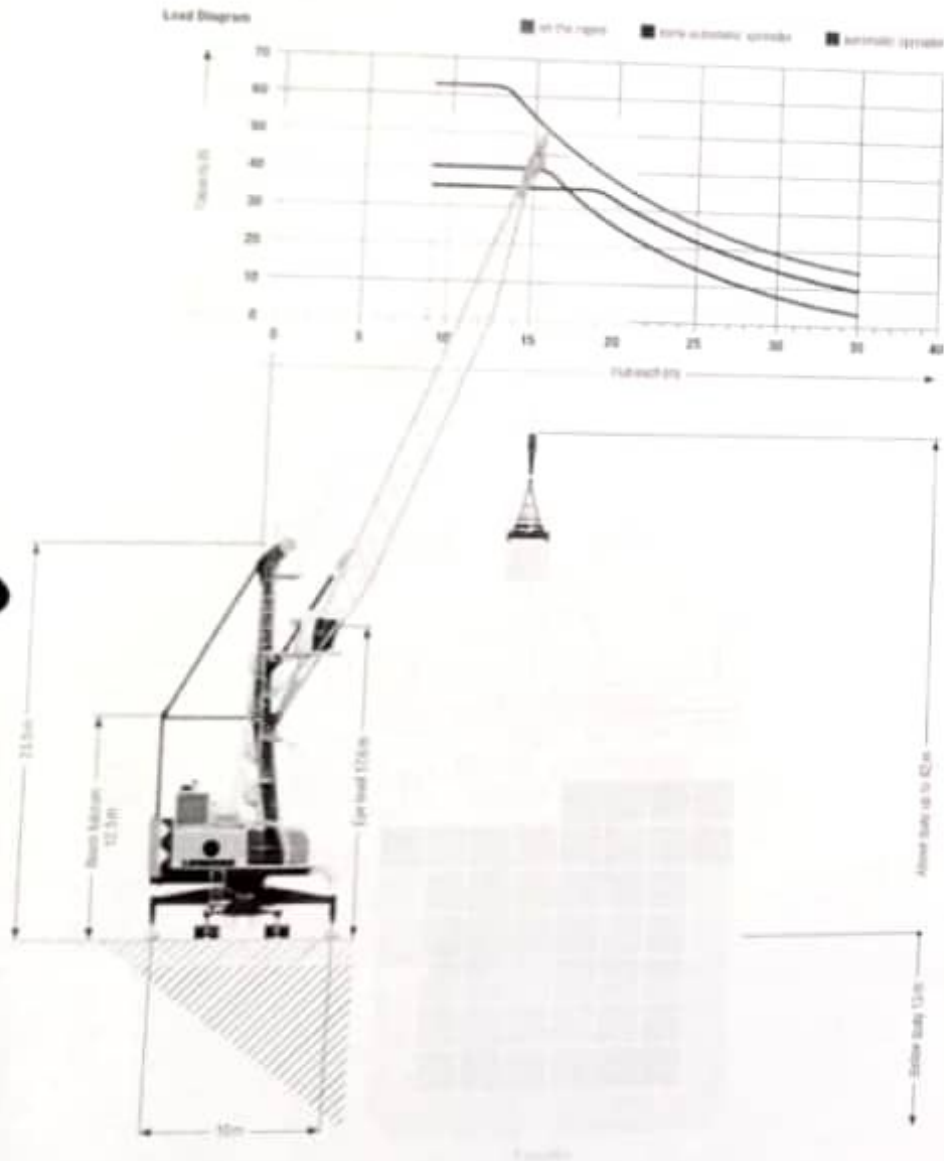
## Standard Configuration / Turnover up to 32 Cycles per Hour Pactronic® / Turnover up to 38 Cycles per Hour

Precision to perfection: With incredibly short acceleration times for all crane motions, Liebherr is the top performer in container handling.

- The crane can be fitted with various types of spreaders (fixed or telescopic) connected to the rotator. Manual, semi or fully automatic telescopic spreaders are available for various container sizes.
- Liebherr Cyclotronic® is an accurate, sway-free load motion control system that uses in-house designed software. Cyclotronic® allows for direct load positioning and aids the crane driver in mastering his task. With Cyclotronic® turnover, safety and the confidence of the operator will be improved.
- Safety: The lifting cylinder is positioned above the lattice boom. This eliminates the possibility of any damage to the cylinder through swinging loads or highly stowed rows of containers on board the vessel.
- The Liebherr hydrostatic drive is the most reliable and highest performing drive system for mobile harbour cranes. Independent closed loop hydraulic systems allow the minimum number of components to guarantee highly responsive, smooth and precise operation while maximizing operational safety.

# Main Dimensions

Container Operation



# Lifting Capacities

Container Operation

Maximum crane capacity 64t

outreach	Work operation	
	on the ropes	Capacity under 40° spreader
0m	64.0	64.0
5	64.0	61.5
10	64.0	59.0
15	64.0	56.5
20	64.0	54.0
25	64.0	51.5
30	64.0	49.0
35	64.0	46.5
40	64.0	44.0
5	54.0	51.5
10	54.0	49.0
15	54.0	46.5
20	54.0	44.0
25	54.0	41.5
30	54.0	39.0
35	54.0	36.5
40	54.0	34.0
5	44.0	41.5
10	44.0	39.0
15	44.0	36.5
20	44.0	34.0
25	44.0	31.5
30	44.0	29.0
35	44.0	26.5
40	44.0	24.0
5	34.0	39.0
10	34.0	36.5
15	34.0	34.0
20	34.0	31.5
25	34.0	29.0
30	34.0	26.5
35	34.0	24.0
40	34.0	21.5
5	24.0	36.5
10	24.0	34.0
15	24.0	31.5
20	24.0	29.0
25	24.0	26.5
30	24.0	24.0
35	24.0	21.5
40	24.0	19.0
5	14.0	34.0
10	14.0	31.5
15	14.0	29.0
20	14.0	26.5
25	14.0	24.0
30	14.0	21.5
35	14.0	19.0
40	14.0	16.5
5	4.0	31.5
10	4.0	29.0
15	4.0	26.5
20	4.0	24.0
25	4.0	21.5
30	4.0	19.0
35	4.0	16.5
40	4.0	14.0

Weight rotor 2.3t  
 Weight fully automatic telescopic spreader 9t  
 Weight semi-automatic spreader 1.3t(2000), 2.5t(4016)

## MULTIPURPOSE CRANE LHM 180 WITH ATTACHMENTS

- >Automatic spreader
- >Log handler
- >Orange peel grab
- >Coil hook of 20 ton
- >Lifting hooks

## Professional Container Handling / Turnover up to 35 Cycles per Hour

Precision to perfection: With incredibly short acceleration times for all crane motions, Liebherr is the top performer in container handling.

- The crane can be fitted with various types of spreaders (fixed or telescopic) connected to the rotator. Manual, semi or fully automatic telescopic spreaders are available for various container sizes.
- Liebherr Cyclotronic® is an accurate, sway-free load motion control system that uses in-house designed software. Cyclotronic® allows for direct load positioning and aids the crane driver in mastering his task. With Cyclotronic® turnover, safety and the confidence of the operator will be improved.
- Safety: The lifting cylinder is positioned above the lattice boom. This eliminates the possibility of any damage to the cylinder through swinging loads or highly stacked rows of containers on board the vessel.
- The Liebherr hydrostatic drive is the most reliable and highest performing drive system for mobile harbour cranes. Independent closed loop hydraulic systems utilize the minimum number of components to guarantee highly responsive, smooth and precise operation while maximizing operational safety.